

Parameters Subject to Change Without Notice

DESCRIPTION

The JW[®]16098 is a multi-topology LED controller with active power factor correction. It is especially designed for LED lighting system. The JW16098 controls the LED current accurately without using an opto-coupler, which can significantly simplify the design of LED lighting system.

The JW16098 achieves high power factor over wide line and load ranges, compared to conventional constant on time control, it also significantly optimized the THD by an improved on time control.

The multi-protection function largely enhances the safety and reliability of the system, including over voltage protection; short circuit protection, LED open protection, cycle-by-cycle current limit, VCC UVLO and over-temperature protection.

Company's Logo is Protected, "JW" and "JOULWATT" are Registered Trademarks of JoulWatt technology Inc.

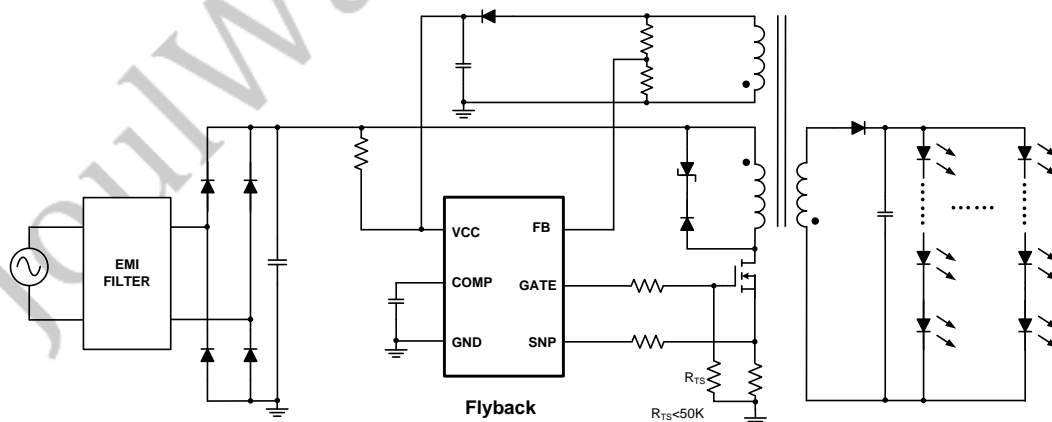
FEATURES

- Real current control without secondary feedback circuit
- Multi-topology supported
- High current accuracy of line regulation
- Active power factor correction
- Optimized THD
- Valley turn-on to low switching loss
- Cycle-by-cycle current limit
- LED short protection
- LED open protection
- Over-temperature protection
- 6-Pin SOT23-6 package

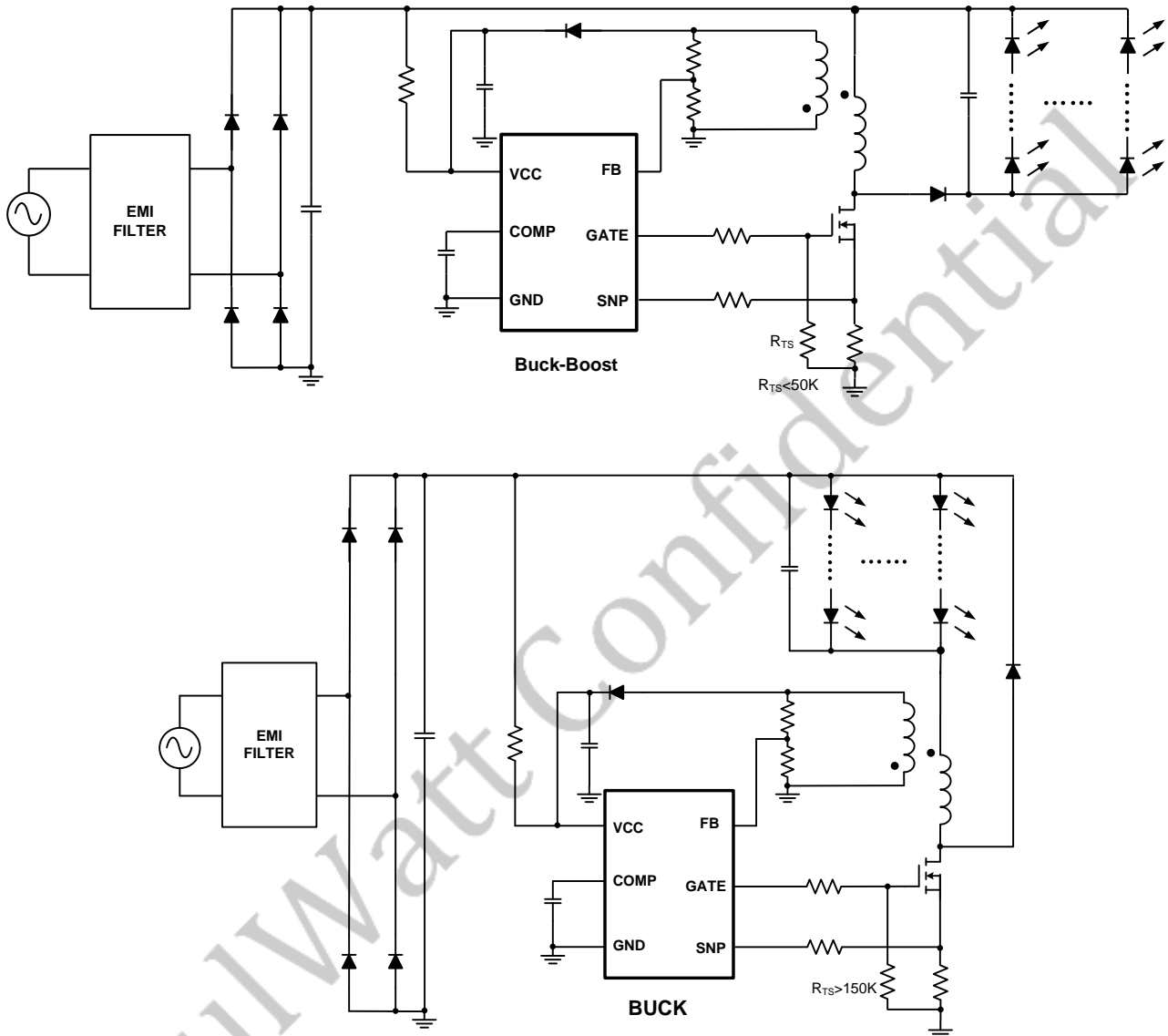
APPLICATIONS

- Offline LED Driver

TYPICAL APPLICATION



TYPICAL APPLICATION



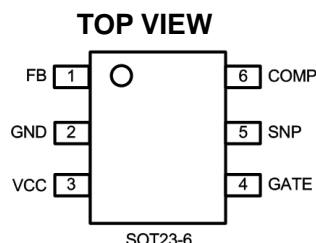
ORDER INFORMATION

DEVICE ¹⁾	PACKAGE	TOP MARKING ²⁾
JW16098SOTB#TRPBF	SOT23-6	JWLP□ YW□□□

Notes:

- 1) JW□□ # TRPBF
 PB Free
 Tape and Reel (If "TR" is not shown, it means tube)
 Package Code
 Part No.
- 2) Line1: JW□□□ Internal control code
 Product code
 Joulwatt LOGO
- Line2: YW□□□ Lot number
 Week code
 Year code

PIN CONFIGURATION

ABSOLUTE MAXIMUM RATING¹⁾

VCC PIN	40V
GATE PIN	24V
All Other Pins	-0.3V to 5.5V
Junction Temperature ^{2) 3)}	150°C
Lead Temperature	260°C
Storage Temperature	-65°C to +150°C

RECOMMENDED OPERATING CONDITIONS

VCC PIN	10V to 30V
FB PIN	1V to 3V
Junction Temperature (T _J)	-40°C to 125°C

THERMAL PERFORMANCE⁴⁾

	θ_{JA}	θ_{JC}
SOT23-6	220	130°C/W

Note:

- Exceeding these ratings may damage the device.
- The JW16098 guarantees robust performance from -40°C to 150°C junction temperature. The junction temperature range specification is assured by design, characterization and correlation with statistical process controls.
- The JW16098 includes thermal protection that is intended to protect the device in overload conditions. Thermal protection is active when junction temperature exceeds the maximum operating junction temperature. Continuous operation over the specified absolute maximum operating junction temperature may damage the device.
- Measured on JE51-7, 4-layer PCB.

ELECTRICAL CHARACTERISTICS

$V_{CC} = 25V, T_A = 25^{\circ}C$, unless otherwise stated.						
Item	Symbol	Condition	Min.	Typ.	Max.	Units
Vcc Supply(Vcc)						
V _{CC} Turn-On Voltage	V _{CC_ON}		22	24	27	V
V _{CC} Turn-off Low Voltage	V _{CC_OFF_L}		7.0	8.0	9.5	V
V _{CC} Hysteresis(note1)	V _{CC_HYS}	V _{CC_ON} -V _{CC_OFF_L}		16		V
V _{CC} Shunt Regulator Voltage	V _{CC_OFF_H}		31	34	37	V
V _{CC} Shunt-off Voltage	V _{CC_ON_H}		25.5	30	34.5	V
V _{CC} Shunt Regulator Pull-Down Current	I _{CC_PD}	V _{CC} =38V		6		mA
V _{CC} Quiescent Current	I _Q	V _{CC} =20V	15	18	21	μA
V _{CC} Quiescent Current with Switching	I _{Q_SW}	Switching frequency =20kHz; Min on time; Gate floating		500		uA
Sense Current of Primary(SNP)						
V _{REF} Voltage	V _{REF}		294	300	306	mV
SNP Offset voltage(note1)	V _{SNP_OFT}			50		mV
SNP Sense Current Limit(Flyback)	V _{SNP_H1}		1.2	1.5	1.8	V
SNP Sense Current Limit(Buck)	V _{SNP_H2}		1.8	2.2	2.6	V
SNP Inductor Short Current Limit	V _{IND_SHT}		2.2	2.7	3.2	V
Leading Edge Blanking Time(note1)	T _{LEB}			400		ns
Line compensation factor(note1)	K _{LC}			0.04		A/A
Output Feedback(FB)						
FB OVP Threshold	V _{FB_OVP}		3.65	3.8	3.95	V
FB Burst on Threshold in CV	V _{FB_CVON}			1.1		V
FB Burst off Threshold in CV	V _{FB_CVOFF}			1.2		V
FB OVP Sensing blanking time	T _{OVP_BLK1}	SNP>0.6V	1.6	2	2.4	us
FB OVP Sensing blanking time	T _{OVP_BLK2}	SNP<0.3V	0.8	1	1.2	us
Compensation(COMP)						
Comp Max Sourcing Current(note1)	I _{SOURCE}			10		uA
Max Comp Voltage(note1)	V _{COMP_H}			4		V
Comp voltage frequency starts to foldback(note1)	V _{COMP_FF}			0.8		V
Maximum Oscillator Frequency high	f _{MAX_H}	COMP=1.5V	96	120	145	kHz
Maximum Oscillator Frequency low	f _{MAX_L}	COMP=0.3V	24	30	36	kHz
Gate output(GATE)						
Gate Output High	V _{GATE_H}		9.6	12	14.4	V
Gate Output Low	V _{GATE_L}				200	mV

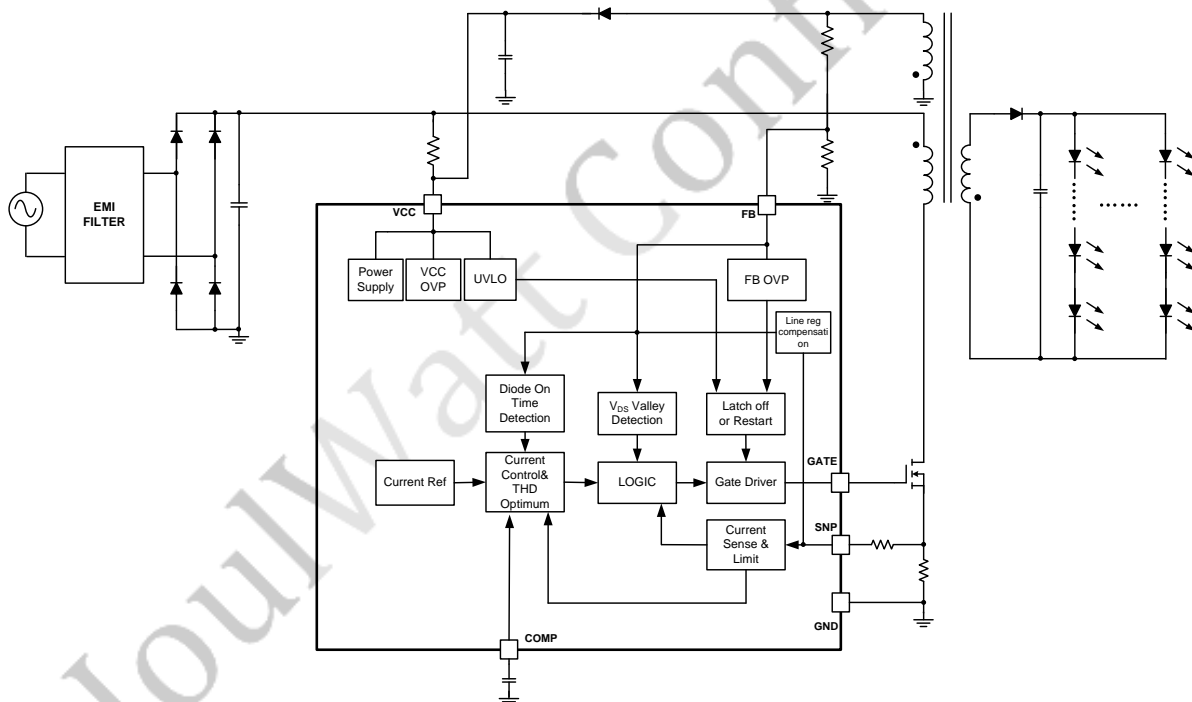
t _r Gate Driver Output Rise Time (note1)	T _{GATE_R}	C _L =1nF 1V to 8V		50		ns
t _f Gate Driver Output Fall Time(note1)	T _{GATE_F}	C _L =1nF 8V to 1V		50		ns
Maximum turn on time	T _{on_max}		30	40		us
Minimum turn on time	T _{on_min}		360	450	540	ns
Maximum turn off time	T _{off_max}		160	200	240	us
Thermal						
Thermal foldback Temperature(note1)	T _{OTPF}			140		°C

Note1: Guarantee by design.

PIN DESCRIPTION

Pin	Name	Description
1	FB	Voltage Loop Feedback Pin. VFB is used to detect open LED conditions by sampling the auxiliary winding voltage.
2	GND	Ground pin.
3	VCC	Power Supply Pin. This pin supplies current to the internal start-up circuit. This pin must be bypassed with a capacitor nearby.
4	GATE	Gate Driver for the External Main MOSFET Switch.
5	SNP	Current Sense Pin. The pin is used for cycle-by-cycle peak current control and limit.
6	COMP	Compensation Pin for Internal Error Amplifier. Connect a capacitor between the pin and GND to compensate the internal feedback loop.

BLOCK DIAGRAM

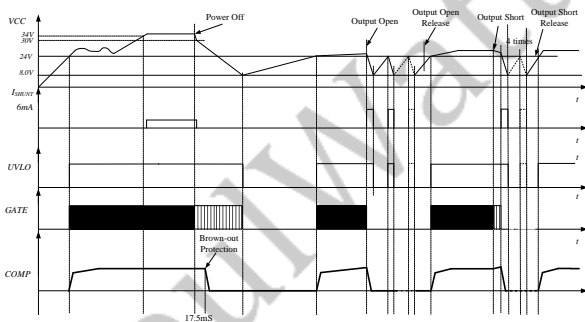


FUNCTIONAL DESCRIPTION

The JW16098 is a multi-topology LED controller optimized for LED lighting. It uses a novel method to calculate the output current without the need of opto-coupler. The JW16098 achieves high power factor over wide line and load ranges, compared to conventional constant on time control, it also significantly optimized the THD by an improved on time control.

Start Up

The JW16098 uses a hysteretic start-up to operate from high offline voltages. A resistor connected to the supply voltage protects the part from high voltages. When the DC line charges VCC up to 24V, the gate drive signal begins to switch. The auxiliary winding provides power to the VCC pin along with the resistor in steady state. The gate turns off if VCC goes below than 8V. An internal voltage clamp helps to prevent VCC from being too high. When VCC goes above 34V, an internal shunt current regulates the Vcc voltage. The shunt stops pulling down when VCC is lower than 30V.



Vcc Timing Diagram

Primary-Side Current Control

The JW16098 controls the output current from the information of inductor current. The output LED mean current can be calculated as:

$$I_o = \begin{cases} \frac{V_{REF} \cdot N_{PS}}{2R_S} & \text{For Flyback} \\ \frac{V_{REF}}{2R_S} & \text{For Buck-Boost} \\ \frac{V_{REF}}{R_S} & \text{For Buck} \end{cases}$$

Where

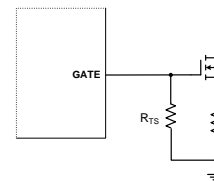
N_{PS} – Turns ratio of primary winding to secondary winding;

V_{REF} – Reference voltage, 300mV typically;

R_S – Sensing resistor connected between SNP and ground.

Multi-Topology Operation Principle

JW16098 supports multi-topology operation with only one resistor R_{TS} that connected between GATE pin and GND pin.



JW16098 works in BUCK mode when R_{TS} is larger than 150Kohm (floating included), and in Buck-Boost/Flyback mode when R_{TS} is smaller than 50Kohm.

Improved COT control to optimize THD

The JW16098 integrates an improved COT control circuit to optimize THD in BUCK-Boost/Flyback mode.

The average input current can be deduced as,

$$I_{in} = \frac{\sqrt{2} \cdot V_{ac} \cdot \sin(t)}{2L} \cdot T_{on} \cdot D(t)$$

Where T_{on} is the on-time of GATE, $D(t)$ is the duty cycle.

The dedicated THD improved circuit can modulate input current as a pure sinusoidal wave,

$$I_{in} = k \sin(t)$$

Here k is a constant.

Line Regulation Compensation Design

The gate turn-off delay is the main reason that causes bad line regulation, the increased voltage on SNP by delay T_d can be expressed as,

$$\Delta V_{SNP} = \frac{V_{IN}}{L_m} T_d R_S$$

Here, R_S is the sensing resistor. T_d is the total turn-off delay of power MOSFET.

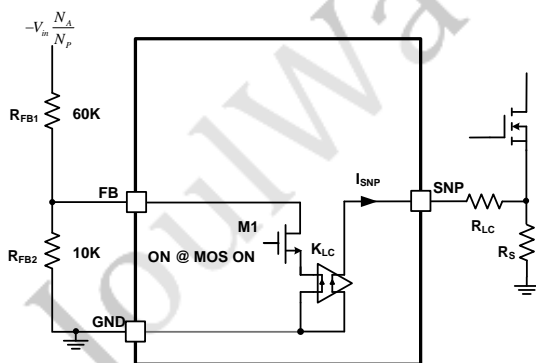
To compensate this increased current of primary side, a current I_{SNP} which is proportional to the voltage on auxiliary winding, sourced from the SNP pin and flows through resistor R_{LC} , the sourcing current is,

$$I_{SNP} = K_{LC} \frac{N_A \cdot V_{in}}{N_P \cdot R_{FB1}}$$

Where, N_A is the turns of auxiliary winding, N_P is the turns of primary winding and K_{LC} is current factor, 0.04A/A.

The RLC can be designed as,

$$R_{LC} = \frac{\Delta V_{SNP}}{I_{SNP}} = \frac{T_d \cdot R_S \cdot N_P \cdot R_{FB1}}{K_{LC} \cdot N_A \cdot L_m}$$



Line regulation compensation circuit

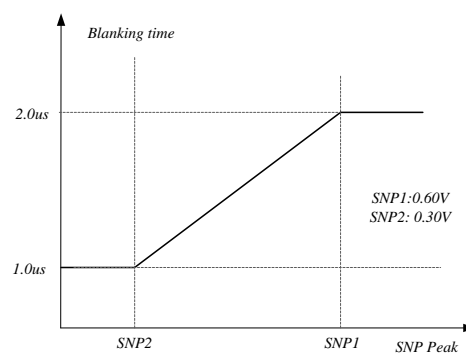
Critical Conduction Mode Operation

Critical conduction mode is a variable frequency switching scheme that always returns the secondary current to zero in each cycle. The JW16098 relies on this mode to calculate the

output current. When the external MOSFET turns off, the energy stored in the inductor forces the secondary freewheeling diode to turn on, and the current of the inductor begins to decrease linearly from peak to zero. When the current decreases to zero, the resonance, caused by the inductor and all the parasitic capacitance, makes the MOSFET drain-source voltage decreases, this decreasing can also be reflected at the auxiliary winding. The turn on signal is generated when the drain-source voltage is approximately at the valley. This switching technique can reduce the MOSFET turn-on losses and diode reverse recovery losses, thus improves efficiency and decreases EMI noise.

Adaptive Blanking Time for FB Voltage Sensing

To filter out the noise on FB and to get an accurate FB voltage via the auxiliary winding, a blanking time is inserted after the MOSFET turns off. The blanking time is modulated by the SNP peak. The minimum blanking time is about 1us, the maximum is about 2.0us.



Loop Compensation

An integrator is applied to the output current feedback loop with a capacitor connected to the COMP. For offline applications, the crossover frequency should be set much less than the line frequency of 120Hz or 100Hz. To have a good PFC performance, a capacitor of 1μF connected to COMP is recommended.

LED Over Temperature Protection

When JW16098 is hotter than 140°C, the internal current reduces linearly in order to reduce the output current. When the temperature is higher than 160°C, the output current reduces to <30% of the rated.

Brown-out Protection

When the peak SNP voltage is lower than 50mV and lasts for 17.5ms, Brown-out protection could be triggered, then COMP is pulled down zero.

LED Open Protection

The output voltage can reflect on the auxiliary winding when the main power switch is off. A resistor divider from the auxiliary winding is connected to the FB pin. FB voltage could be detected with an OVP blanking time after the main MOSFET turns off. If the FB voltage is higher than 3.8V, LED open protection could be triggered and the GATE stops switching, and Vcc is pulled down to 8V by an internal sink current and then charged to 24V by the external resistor, which repeats for four times of discharging and charging of Vcc before the next

detection cycle.

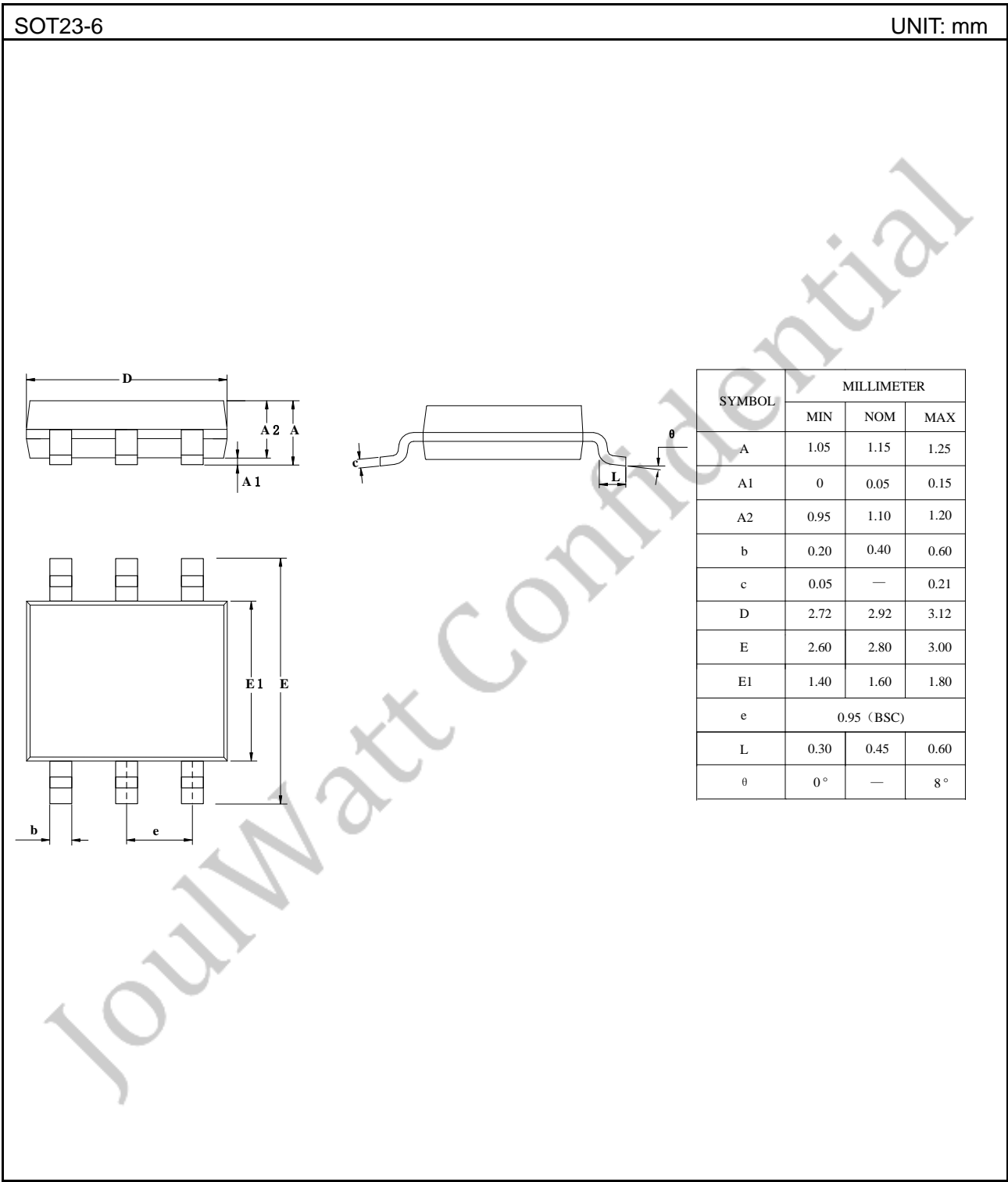
LED Short Protection

When the output is shorted, the auxiliary winding voltage comes to zero. JW16098 counts this state for 100ms, if short goes on, it stops switching and set a FAULT flag. Vcc is pulled down to 8V by an internal sink current and then is charged to 24V by the external resistor, which repeats for four times of discharging and charging of Vcc before the next detection cycle.

PCB Guidelines

1. The bypass ceramic capacitor of VCC should be nearby the VCC and GND as close as possible.
2. To reduce EMI noise, the power loop area should be as small as possible.
3. JW16098 should be kept away from noisy and heating components, such as MOSFET, transformer and diode.
4. FB pin should be kept away from sources of interference; a 20pF capacitor could be paralleled if necessary.

PACKAGE OUTLINE



IMPORTANT NOTICE

- Joulwatt Technology Inc. reserves the right to make modifications, enhancements, improvements, corrections or other changes without further notice to this document and any product described herein.
- Any unauthorized redistribution or copy of this document for any purpose is strictly forbidden.
- Joulwatt Technology Inc. does not warrant or accept any liability whatsoever in respect of any products purchased through unauthorized sales channel.

JoulWatt Confidential

Copyright © 2018 JW16098 Incorporated.

All rights are reserved by Joulwatt Technology Inc.